



Washington
State Department of
Agriculture



WSDA Regional Markets Program

Farm to School in Washington



Annette Slonim
Farm to School Lead

WSDA Regional Markets Program



WSDA Regional Markets supports the economic viability of small and direct marketing farms and increases the availability of Washington grown products in schools, institutions, and on tables throughout our state.



What is Farm to School?



CORE ELEMENTS OF **FARM to SCHOOL**



Why Farm to School?



Students Win



Farmers Win

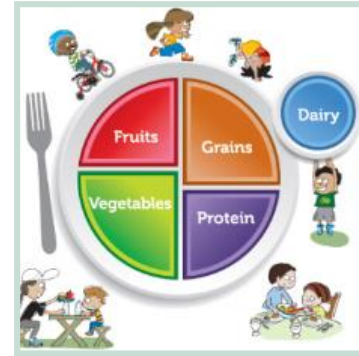


Communities Win

Farm to School Benefits

Students

- Eat more fruits and vegetables
 - +0.99 to +1.3 servings per day
- Improves learning
- Better health and future food choices



Farm to School Benefits

School district

- Increases meal participation
 - 3-16% increase
- More learning opportunities
- Supports the local economy
- High quality, tasty food



Farm to School Benefits

Farmer

- ❑ Improves student health
- ❑ Teaches kids about agriculture
- ❑ Stable market and increase in sales



Farm to School Benefits

Community

- Boosts local economy
 - \$0.60 - \$2.16 for every \$1 spent
- Job creation
- Increase in food security and healthy families
- Fun!

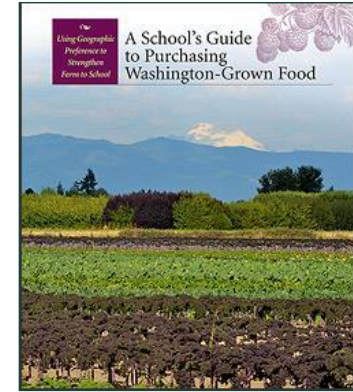


Farm to School Programming



- Taste Washington Day
- Trainings and workshops
- Technical assistance for schools and farms
- Factsheets and tools
- Policy, research and surveys
- Special projects
- **Purchasing grants!**

Learn more at <https://agr.wa.gov/farmentoschool>



WSDA Farm to School Toolkit

FOR
SCHOOLS

FOR
FARMERS

RECIPE
TOOLKIT

WASHINGTON GROWN FOOD & RECIPE KIT



RESOURCES FOR SCHOOL GARDENS AND FARM EDUCATION

Food grown in school gardens can be served in the cafeteria! Learn about best practices for food safety in the school garden and ways to integrate garden produce into school meals.

[READ MORE](#)

Brief History of Farm to School in Washington

2008: Local Farms Healthy Kids Act

2010-2014: Trainings, Workshops, Networking Meetings

2011: Online F2S Toolkit launched

2012 & 2013 : WSFFN Statewide Summits for farmers and schools

2014: A School's Guide to Purchasing and Local Food Directories published

2015: WSDA Farm to School Summit

2016: USDA Pilot Project, Farm Tours

2017-18: Statewide Network Formation & Network Launch

2019 – 2021: Farmer/Buyer Networking Meetings (in-person and virtual)

2021: \$5 million to expand Farm to School and launch Purchasing Grants

2021: Farm to School & Scratch Cooking Institutes

2023: Farm to School Roadshows: Connecting School Buyers & Local Producers

Publications and Online Resources: agr.wa.gov/farmtoschool



WASHINGTON AGRICULTURE SERVICES DEPARTMENT ABOUT WSDA

WHAT DO YOU NEED TODAY? LET'S FIND IT

WSDA FARM TO SCHOOL TOOLKIT

This toolkit is designed to provide farms, schools, families, and communities with resources to help them meet their farm to school goals. Through tools, templates, resources, stories, photos, documents and more, the toolkit highlights farm to school and school garden success stories throughout the state and draws together best practices and farm to school tips from our in-state and national network partners.

[Click here](#) to read more about the WSDA's farm to school program and services.

FOR SCHOOLS

Schools and staff can find planning tools, publications, newsletters, templates, farm listings, and much more here to support Washington's farm to school program.

For Schools: Resources for Local Food in Schools

FOR FARMERS

Schools around the state are interested in connecting with and sourcing from local farms. Learn more about this opportunity, how it works, and get some resources for selling to schools.

For Farmers: Resources for Selling to Schools

RECIPE TOOLKIT

Find recipes, educational and promotional materials, general info, and nutrition facts for serving Washington grown foods in schools and other meal programs.

Washington Grown Food & Recipe Toolkit

Washington Department of Agriculture

2019 HANDBOOK for SMALL AND DIRECT MARKETING FARMS

REGULATIONS AND STRATEGIES FOR FARM AND FOOD BUSINESSES

FARM WISDOM

Regulations and Strategies for Farm Businesses

The logo for the Washington State Department of Agriculture (WSDA), featuring a stylized mountain range in blue and green above the letters "WSDA" in blue.

The Living Geographic Preference to Strongify Farms to School

A School's Guide to Purchasing Washington-Grown Food

Bridging the GAP's

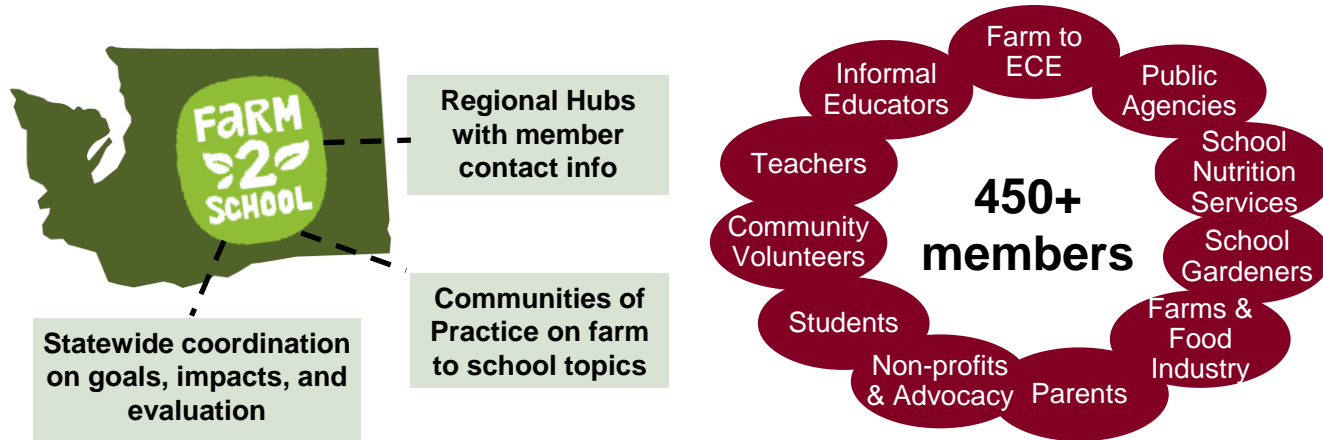
FARM GUIDE

Good Agricultural Practices and On-Farm Food Safety for Small, Mid-Sized, and Diversified Fruit and Vegetable Farms

Based on the USDA Good Agricultural Practices Good Handling Practices (GAP/GHP) Audit Program documents

A publication of the Washington State Department of Agriculture

Washington State Farm to School Network



[For more Info: waf2snetwork@gmail.com](mailto:waf2snetwork@gmail.com)

[Sign up at: www.wafarmtoschoolnetwork.org](http://www.wafarmtoschoolnetwork.org)

Washington State Farm to School Network

wafarmtoschoolnetwork.org

Regional Hubs with
member contact info

Washington State Farm to School Network Regions



Communities of Practice
on farm to school topics

**Food &
Agriculture
Education**

**Farm to
ECE**

**Local Food
in School
Meals**

**School
Gardens &
Farm-Based
Education**

Network Action Teams
work on goals, impacts,
communication

**Storytelling
& Metrics**

**Outreach &
Advocacy**

**Network
Coordination
Team**

Washington State Farm to School Network

Vision Goals

School Gardens & Farm-based Learning

Support school gardens and farms in every willing school

Local Food Sourcing

Increase the amount of local, Washington produced foods purchased and served by K-12 schools.

Food & Agriculture Education

Increase student understanding of where food comes from through education about food, agriculture, and nutrition.

Farm to ECE

Increase the number of early childhood education programs incorporating farm to school.



Washington State Farm to School Network Strategic Priorities

✓ School Gardens & Farm-based Learning

Develop a school garden sustainability model and funding

✓ Local Food Sourcing

Increase collaboration and dialogue between farms and schools

✓ Food & Agriculture Education

Create a statewide Harvest of the Month model with resources for classroom, cafeteria, and community to promote local food

✓ Farm to ECE

Raise awareness of Farm to ECE among ECE providers

Washington State Farm to School Network 2019 Updated Goals & Priorities

- ***School Gardens & Farm-based Education***

- ✓ Integrate and share professional development opportunities

- ***Local Food Sourcing for School Meals***

- Continue and do more conference calls

- ✓ Regional farmer & food service meetings to build relationships

- ***Farm to ECE***

- ✓ Make the Network's website a hub for ECE professionals

- ✓ Increase CoP membership & participation

- ***Food & Agriculture Education***

- Recruitment to bring more energy and ideas

- Create more dynamic ways to communicate

Save the Date!

**Washington State
Farm to School Network
Gathering**

**Friday, June 9, 2023
Wenatchee**

Farm to School Purchasing Grants



**\$5 M,
ongoing!
Yay!**

The new Farm to School Purchasing Grants provides school nutrition and early care and education programs with **additional purchasing dollars** to source Washington-grown foods.

Grant Goals:

- *Increase direct-sourcing from a diverse set of Washington farms and food producers.*
- *Increase the variety and volume of Washington food purchased for use in school and child care meal programs.*



Farm to School Purchasing Grants



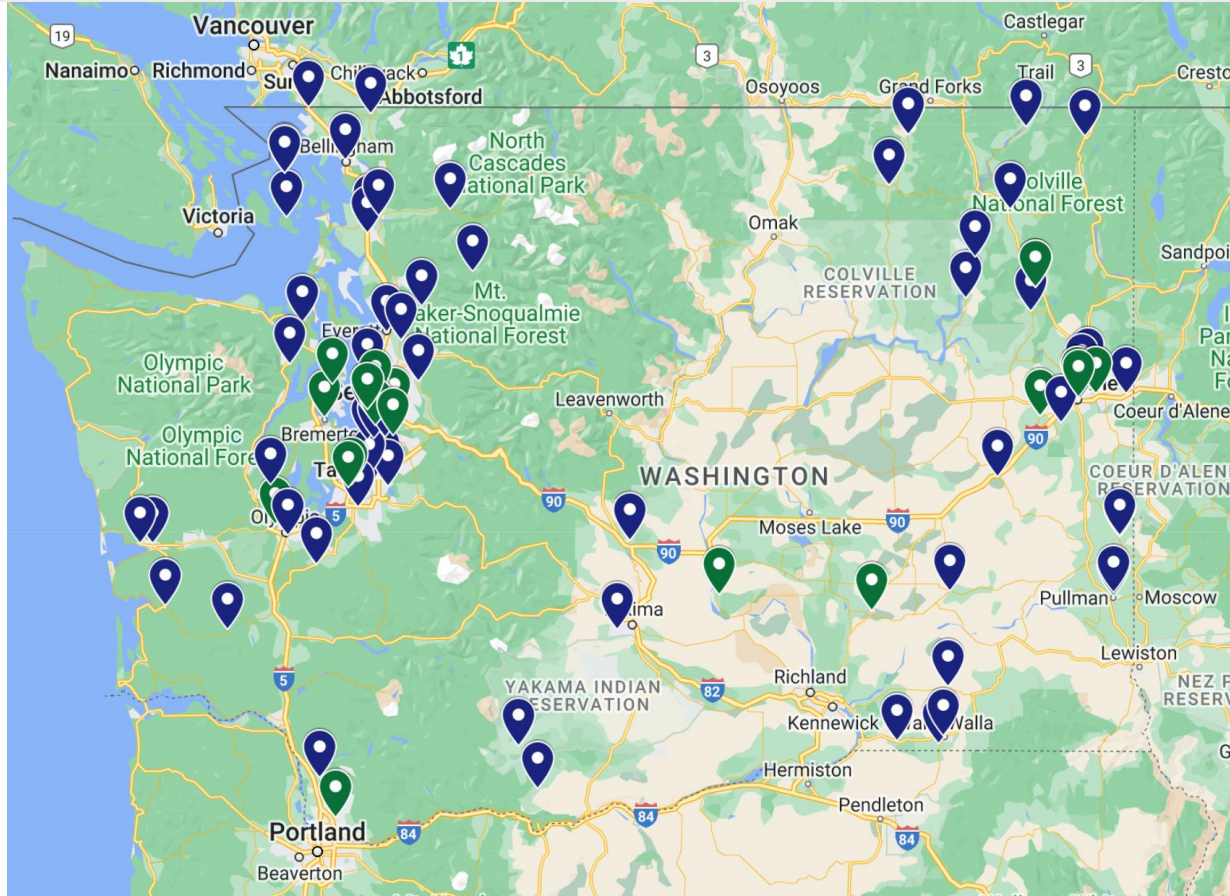
2021-2023:
>\$4.5 million awarded
to >90 Grantees

How to connect with grantees:

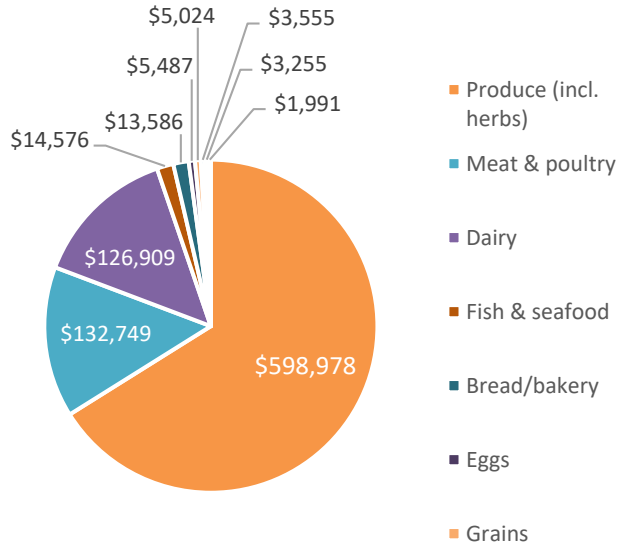
- *Download the list and from the agr.wa.gov/farmentoschool → “Grants” webpage*
- *Register with the Washington Food & Farm Finder Wholesale Directory.*



2022-23 Grantees by Location

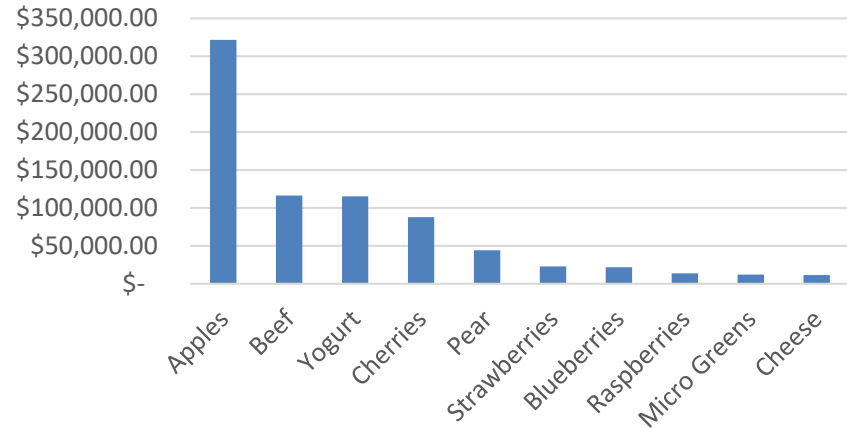


Year 1 Summary: Jan – Aug 2022



Spend by Food Category

Top 10 Products by Total Spend
(includes fresh, frozen, dried)



How to Get Involved



- [Join](#) the WA State F2S Network and connect with [members near you](#)
- Reach out to your [local school district](#) (sourcing, coordination, education)
- Create or update your listing on the [WA Food & Farm Wholesale Finder](#)
- Attend a future farm to school training or event
- Track policy efforts to advance farm to school at the local, state, and federal level
 - [Example: USDA Proposed Updates to the Child Nutrition Standards](#)
 - *Allowing schools to limit food contract bids to products that are locally grown, raised, or caught.*
 - *Supporting schools serving primarily American Indian and Alaska Native children in offering more culturally appropriate foods.*
 - **OPEN COMMENT PERIOD THROUGH APRIL 10, 2023**



Contact Us!

Regional Markets – Farm to School Program



Washington
State Department of
Agriculture

Annette Slonim

Farm to School Lead

ASlonim@agr.wa.gov



WEB

agr.wa.gov/farmentoschool

Claire Finnerty

Farm to School Purchasing Grant Specialist

Claire.Finnerty@agr.wa.gov

wafarmentoschoolnetwork.org

